

Cleco Corporation

Ben Russo



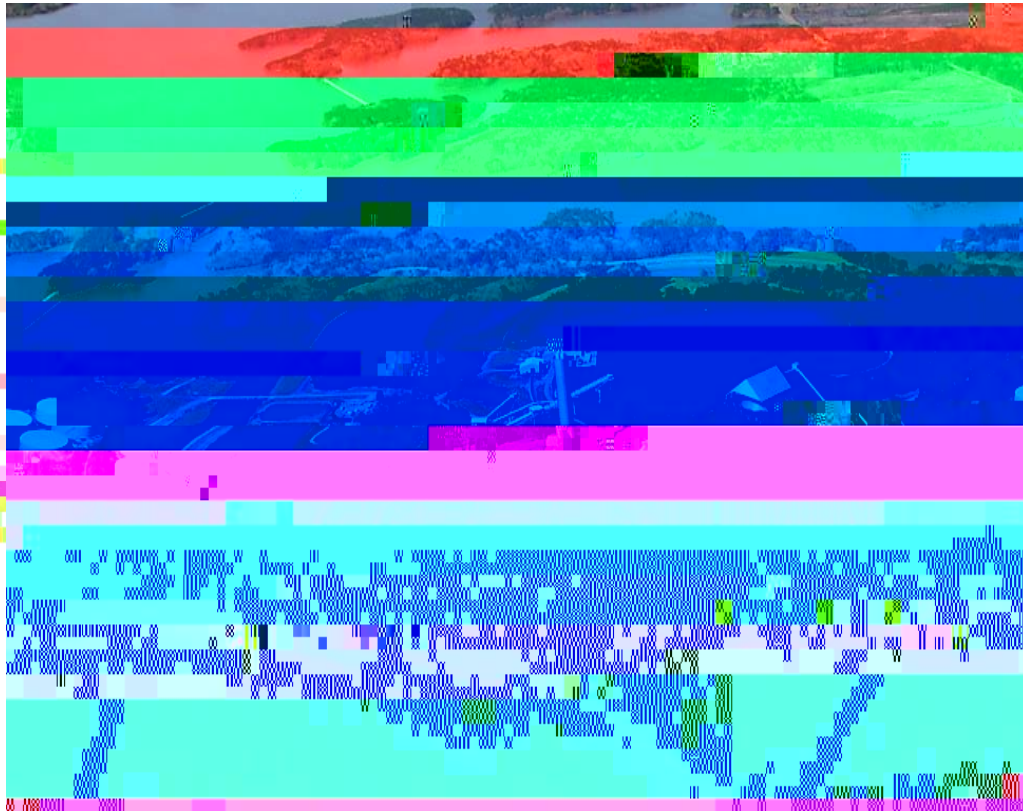
Cleco Corporation (CNL)

Two primary subsidiaries
Balance sheet: \$2.7 billion
Market cap: \$1.5 billion

Integrated, regulated electric utility serving 270,000 customers in Louisiana for over 70 years

Wholesale generation subsidiary with 1,355 MW of capacity

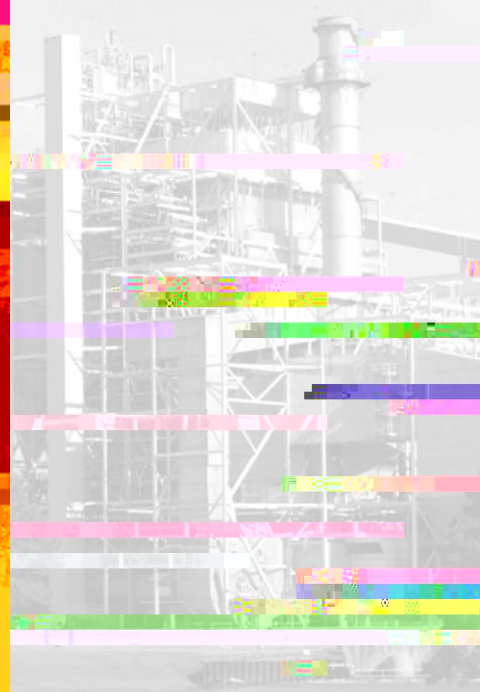
Overview of Rodemacher Unit 3



- 600-MW, solid-fuel power generator
 - Incorporates Circulating Fluidized-Bed (CFB) Technology
 - Foster Wheeler design
 - State-of-the-art pollution controls
- Expected commercial operation:
 - mid-to-late 2009



Figure 1.2 Heat flow areas of the northern and central United States—a subset of the geothermal map of northern America (Blackwell and Richards, 2004)

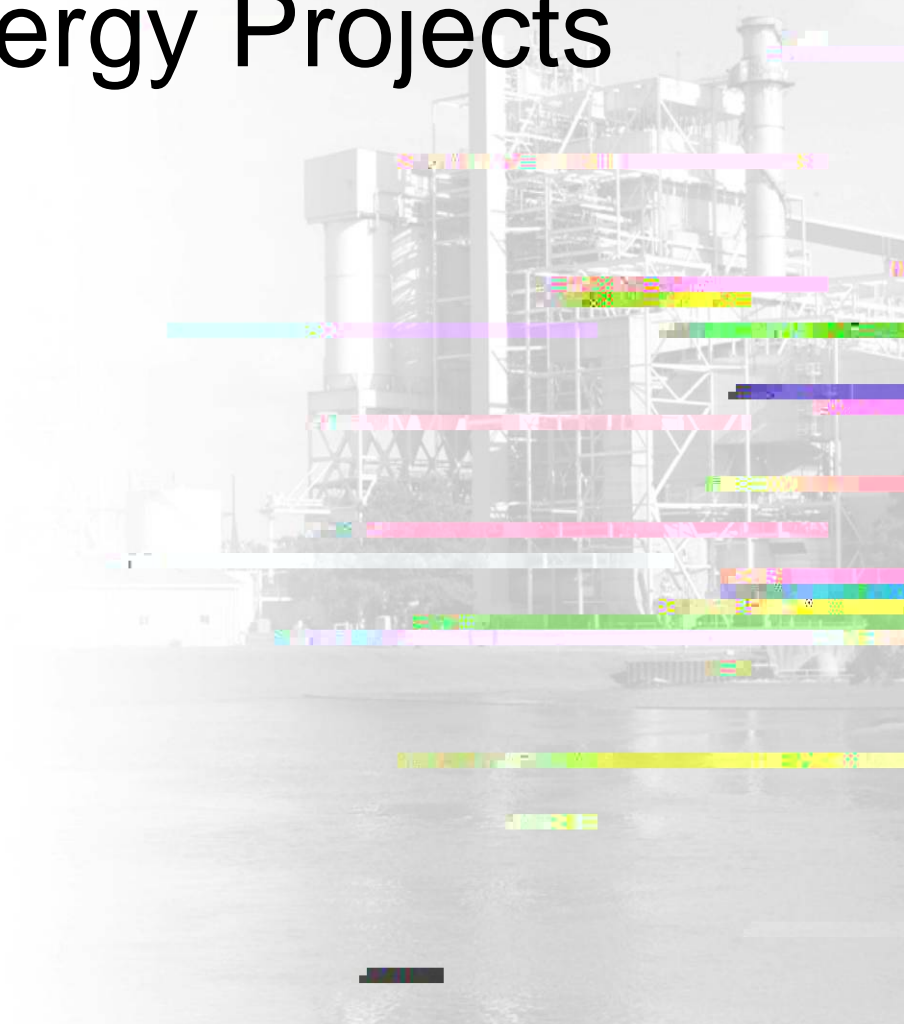


Distributed Generation

- Generation located close to load pocket
- Increase Voltage Control
- Decreased line losses
- Enable the Electrification of remote regions

Why Cleco started looking at Geothermal Energy Projects

- High Reliability



High Reliability

- Increased Capacity Factor
- Storm Risk Management



Why Cleco started looking at Geothermal Energy Projects

- Renewable Requirements



Renewable Requirements

- Wind
- Landfill Gas
- Hydroelectric
- Biomass



Why Cleco started looking at Geothermal Energy Projects

- Carbon Footprint Reduction

Carbon Footprint Reduction

- Climate Change Legislation



Why Cleco started looking at Geothermal Energy Projects

- Economic Development

