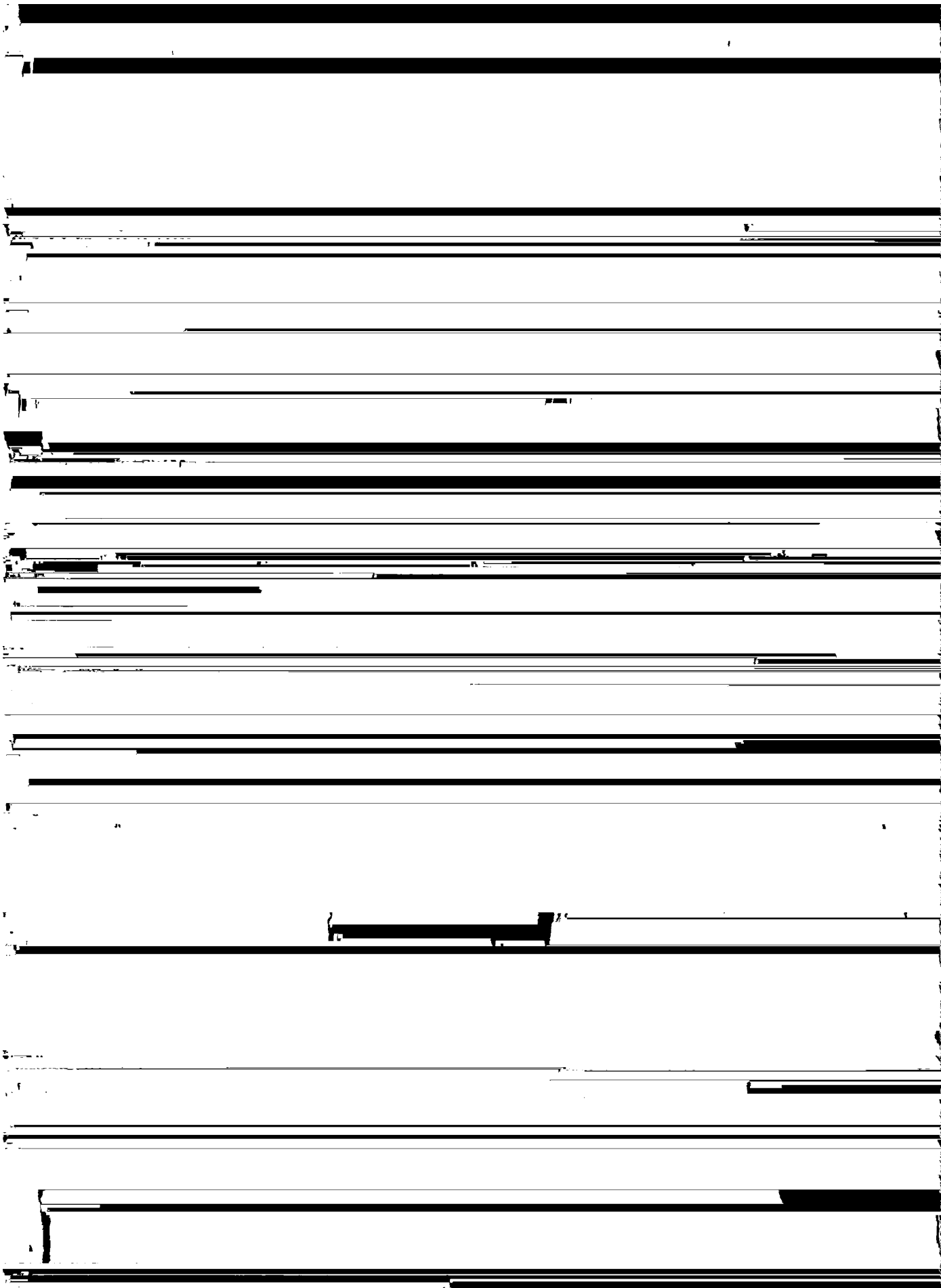


Further on the following Company, recording
installments have been published in The
Oil Weekly of October 21 and 28, November 4
and 11, and December 2 and 9.

South Louisiana.

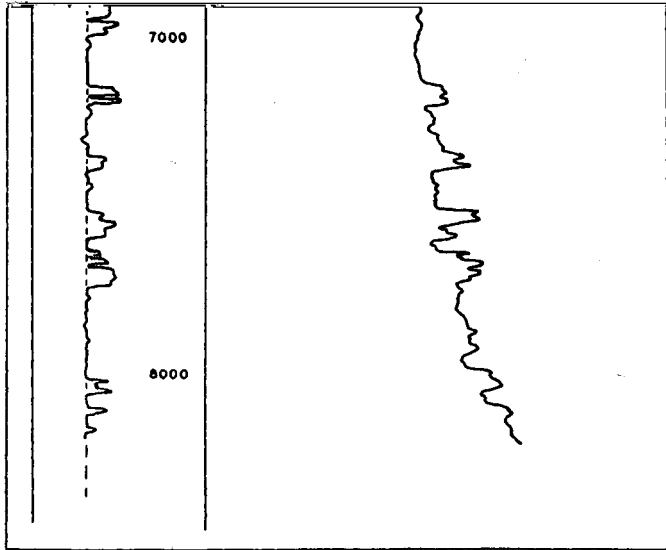
After Deussen & Guyod, Courtesy AAPG.

cement job is done, while temperatures
of the same order are observed only



which have been recently cemented. Therefore, by comparing the temperature and caliper logs, it is usually possi-

Figure 7-4. Hypothetical time-temperature graphs at a given level of a freshly cemented well (slow-setting cement).



the heat evolved possible.

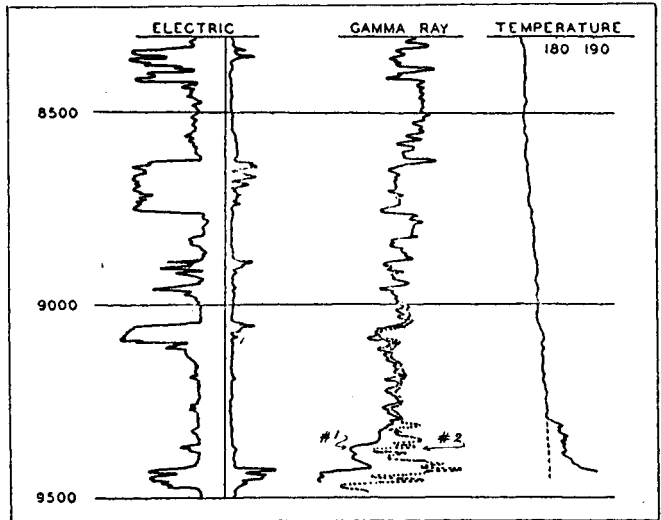


Figure 193. Use of temperature log and compo log for accurately picking top of cement.

Figure 190. Location of cement behind pipe after squeeze job. After Tepplitz & Hassebrook.