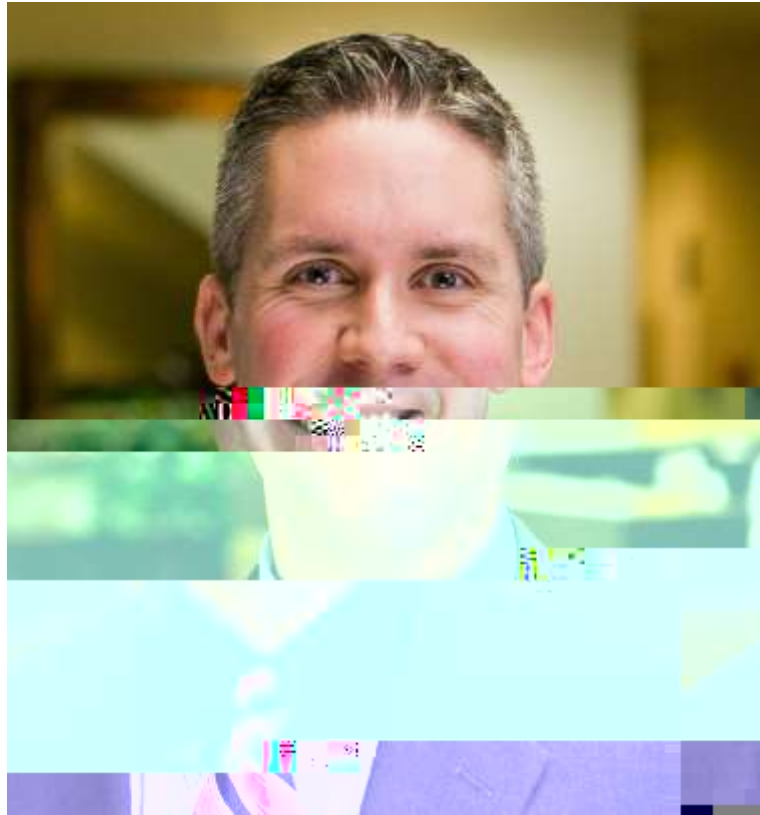


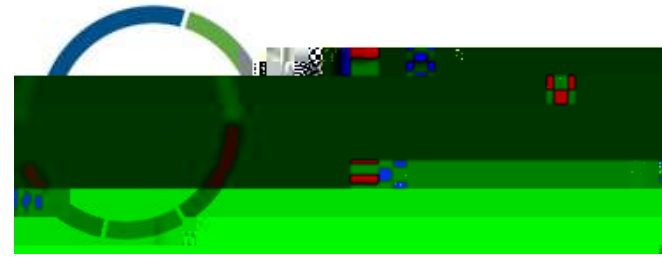


Back to Campus - Back to Title IX: Confronting the Challenges of the 2020 Regulations



H O S T

Visit us on the web at ELA.LAW



JOSH SALSBUREY

Member
Sturgill, Turner, Barker & Moloney



RESOURCES

REGISTER

LOGIN



FLA Employment...

ABOUT

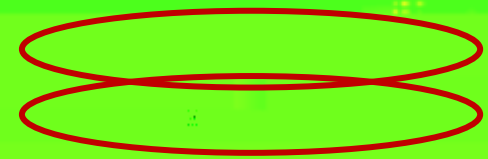
REGIONS

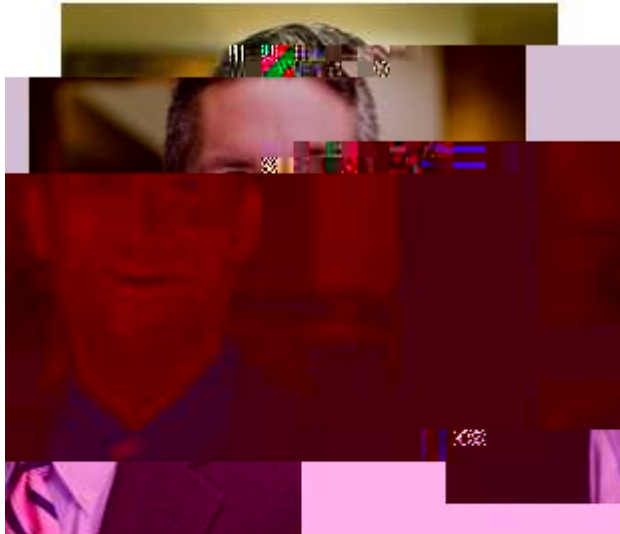
GLOBAL EMPLOYER

NEWS &

WEBINARS &

FIND A





OST

the web at ELA.LAW

Visit us on



www.ELA.LAW

ELA.LAW
The American
Employment Law
Association
1000 Pennsylvania
Avenue, N.W.
Washington, D.C.
20004-2000
202.462.5000
www.ELA.LAW

ELA.LAW
The American
Employment Law
Association
1000 Pennsylvania
Avenue, N.W.
Washington, D.C.
20004-2000
202.462.5000
www.ELA.LAW

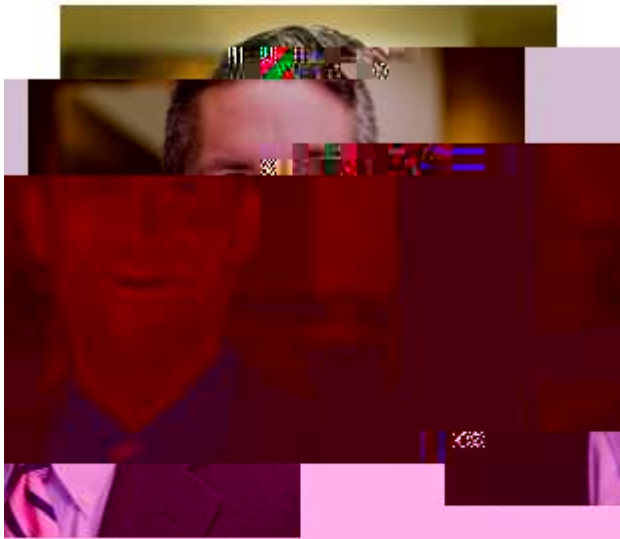
ELA.LAW
The American
Employment Law
Association
1000 Pennsylvania
Avenue, N.W.
Washington, D.C.
20004-2000
202.462.5000
www.ELA.LAW

www.ELA.LAW

ELA.LAW
The American
Employment Law
Association
1000 Pennsylvania
Avenue, N.W.
Washington, D.C.
20004-2000
202.462.5000
www.ELA.LAW

ELA.LAW

www.ELA.LAW



OST

the web at ELA.LAW

Visit us on

Q&A

Welcome to Q&A

Questions you ask will show up here. [Click here](#) to ask a question. Host and panelists will be notified to see all questions.



The ELA Presents



Event Resources

Presentation Slides & Certificate of Attendance

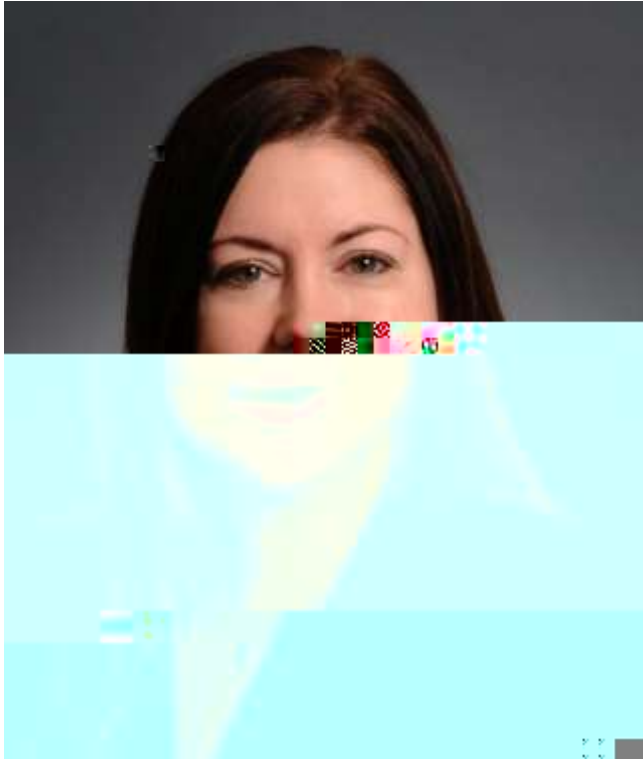
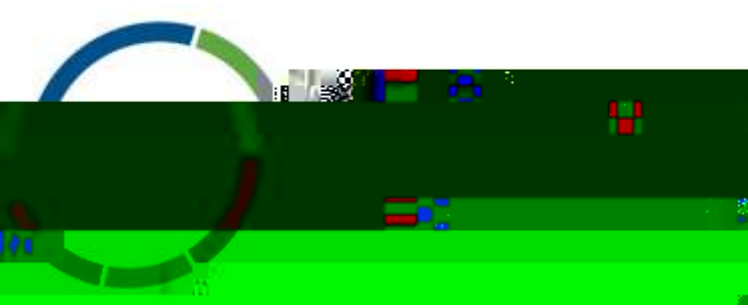
+

Resources provided by the speakers and their firms:

+

ELA Resources

+



MODERATOR

SUSAN DENIKER

Member

West Virginia



Overview

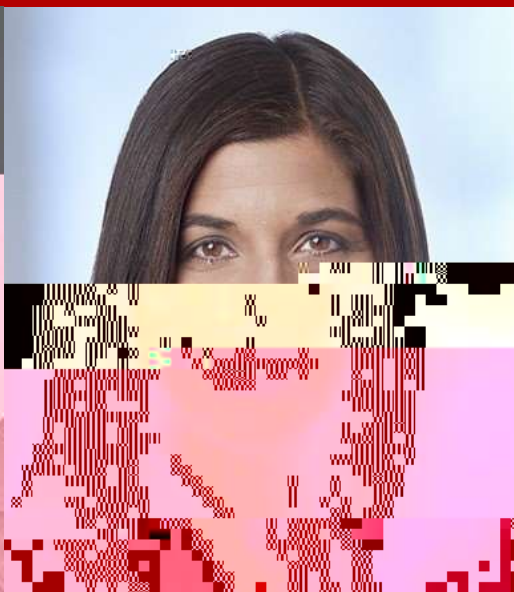
Back to Campus - Back to Title IX: Confronting the Challenges of the 2020 Regulations

Panelists



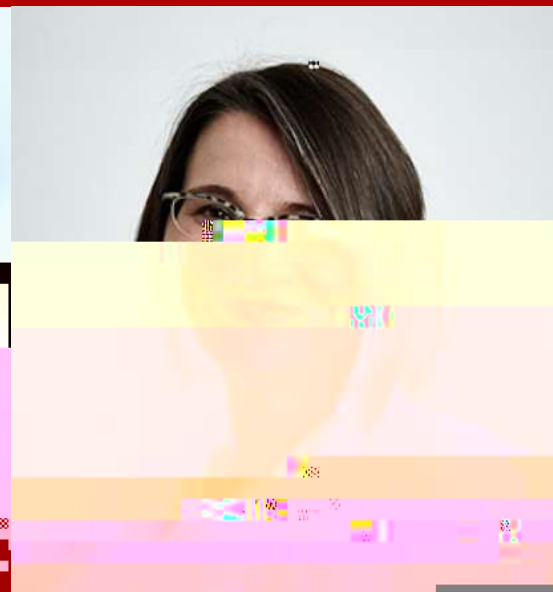
DEREK ISHIKAWA

California
dishikawa@hkemploymentlaw.com



KATHRYN M. NASH

Minnesota
kathryn.nash@lathrogpm.com



KATE NASH

Missouri - Eastern
knash@tuethkeeney.com



Derek Ishikawa
Attorney
Hirschfeld

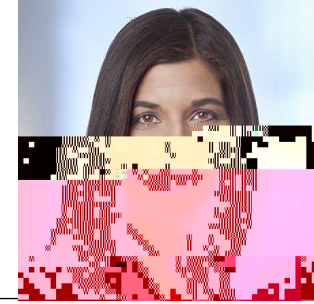


Derek Ishikawa



Amending Notice of Allegations

Access to Directly Related Evidence



Kathryn M. Nash
Partner
Lathrop GPM LLP
Minnesota

Changes Regarding “ Statements” Not Subject to Cross-Examination



Kate Nash
Shareholder
Tueth Keeney Cooper Mohan &
Jackstadt, PC
Missouri - Eastern

Derek Ishikawa







The ELA Presents

Back to Campus and Back to Title IX

Speakers

Moderator

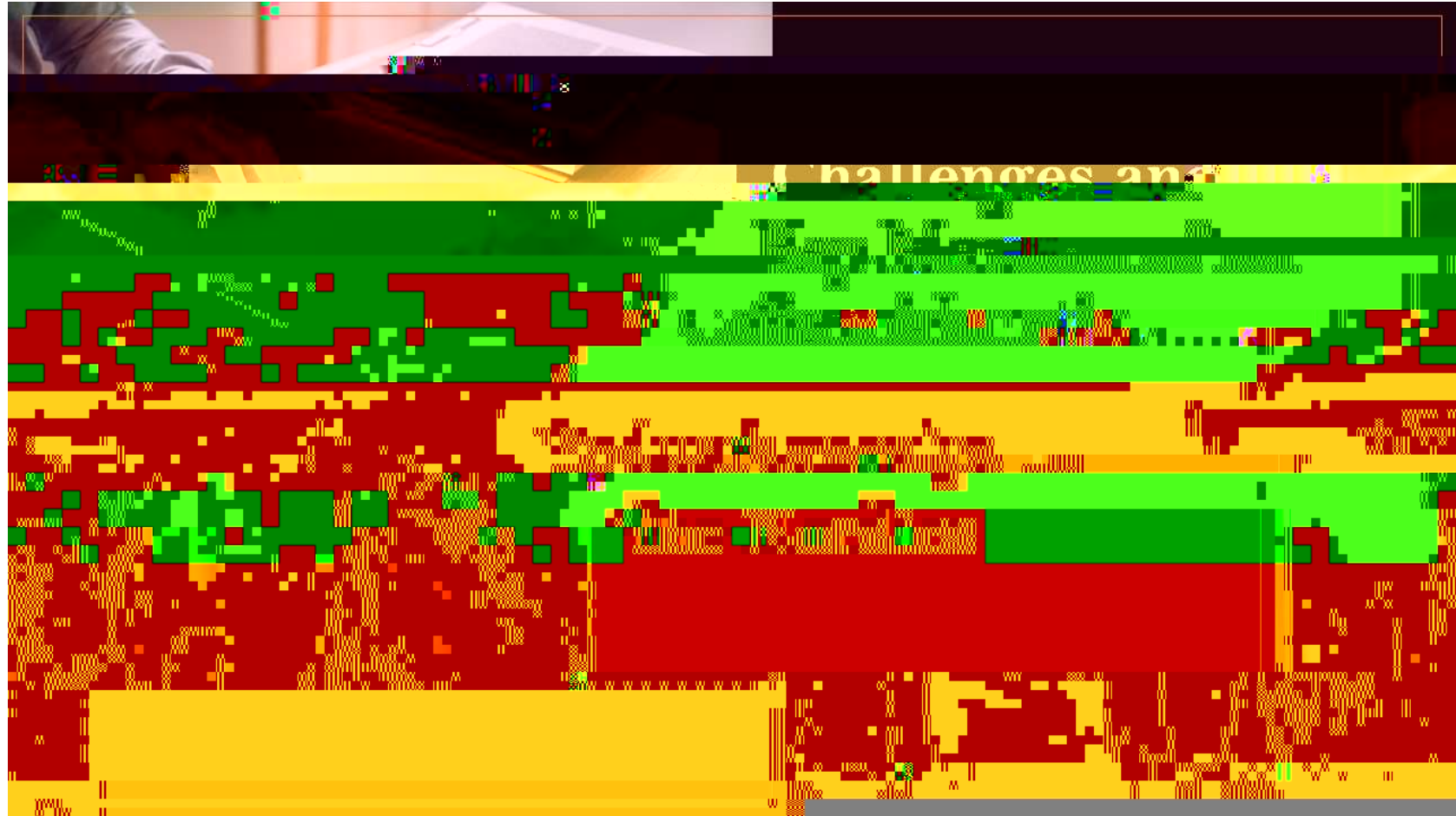
Presenter

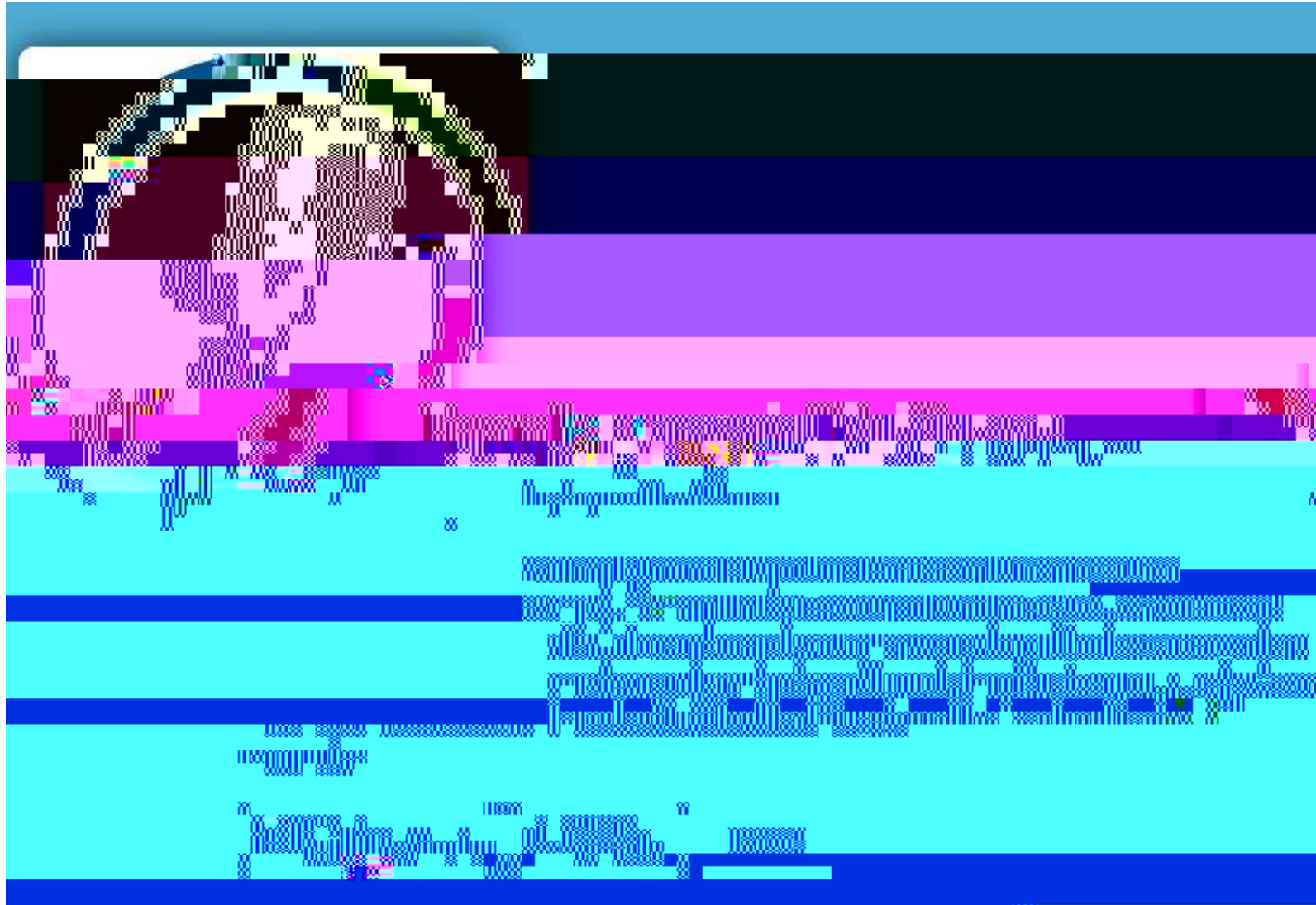


Coming Up Next!

[Register today!](#)

September 29, 2021





Listen to the
Employment
Matters
Podcast

Continuing Education Credit



The ELA Presents



Event Resources

Presentation Slides & Certificate of Attendance



Resources provided by the speakers and their firms:



ELA Resources

Continuing Education Credit



This program is valid for **1.25** PDCs

Course Number: **21-4QTGY**

Visit www.SHRMcertification.org to submit PDCs

A **Certificate of Attendance** and supporting materials are available for download in the resources tab and will also be included in your follow-up materials sent via email. Attendees seeking continuing education credit should submit these materials directly to the appropriate organization.

